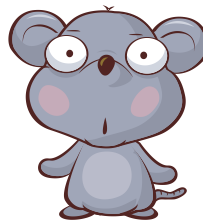
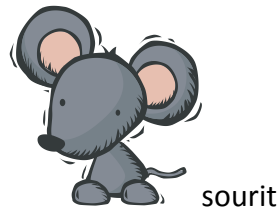




## Dogzilla

Pandan ete, nan vil Mousopolis sourit yo te reyini pou yo fè manje nan yon lakou. Manje a te sou dife, sourit yo te kontan. Yon ti van vin tap souflé e rive jis anlè yon ansyen bouch **volkan**. Sant manje a te gaye toupatou. Toudenkou yo tande yon son etranj: “ Sniff... sniff. Sniff sniff sniff sniff...” Apre sa, tè a kòmanse tranble, yon gwo **kreyati!** yon **mons!** Li sòti nan yon twou pou li vini patisipe nan manje a, e **terifye** tout sourit yo. Se te **Dogzilla!**

Menm lè a, gwo chef nan zòn la voye lame li a rete bèt sovaj la. Kòmandan an chef Lame **eroik** sa a te yon brav solda, yo te rele “**Big Cheese.**” San oken siy! Godzilla soufle souf li sou sourit yo. “Mons la souflé, li souflé” gad yo tonbe rele:



“Kouri pou nou pa mouri.” Yo kouri san gade dèyè.

“Gade non, tounen” **Big Cheese** ap di gad li yo. “Sa nou ye? “Gason osinon sourit?”  
“Hmmm,” **Big cheese** di: “Oke, Oke!...rete tann mwen.” Bèt la manje tout manje yo te prepare e kòmanse fè sa chen renmen fè. Godzilla kouri dèyè machin – jis sou gran chimen! Li manje magazen ak tout mèb. Li fouye twou pou li chèche zo nan “*Mize Istwa Natirèl la.*”

*Pandans tan **Big Cheese** òganize yon reyinyon ak yon gwo **syantis**, yo rele l pwofesè Scarlett O’Hairy pou li konn sa pou l fè. Pwofesè a di: “Ti sourit mwen yo, mons sa granmoun anpil.*

Grade 2\_ Tèm 3 : Istwa Enkwayab

Nou ka fè li fè bagay positif nan kominote a. Nou dwe fè Godzilla pè jiskake li kite vil la.

Si nou bezwen regle ak mons la, se pou nou panse tankou yon chen. Ki sa chen pa renmen?"  
Benyen!

Yo repond. Yo ale, yo voye savon ak dlo cho sou mons la. Godzilla si tèlman sezi li kouri rantre  
nan twou kote li te soti a.



Syantist ki ap fè eksperyans

Sourit yo vin gen kè kontan ankò. Yo sèten Dogzilla pap retounen lè yo reyini ankò pou yo fè  
manje an ete nan lakou a. Sa yo te panse a se te vre, men gen yon sèl bagay yo pa t kalkile... e  
pitit Dogzilla yo!



Sourit



chen yo



dogzilla



volkan

## Aktivite

### Mwen konprann tèsk la

Eksplike elèv yo nan istwa ki **imajine** genyen **pèsonaj** ak **evènman** ki se **fè sanblan**. Istwa **reyèl** li menm pale ou de **pèsonaj** ak **evènman** ki kapab **reyalite** nan lavi a.

Nan istwa a dekri ki sa ki imajinasyon ousinon reyalite?

<b>Evènman</b>	<b>Fè sanblan</b>	<b>Reyalite</b>

1. Poukisa otè a itilize reyalite nan istwa a?
2. Poukisa otè a dekri kijan son an etranj?
3. Poukisa sourit yo te terifye anpil?
4. Poukisa otè a te nonmen kòmandan an chèf **“Big Cheese”**?
5. Èske ou panse sa ka rive nan la vi reyèl.
6. Kijan yo rele pwofesè a? E ki konsèy li bay soutit yo?

### An nou reflechi sou istwa a?

1. Èske pèsonaj nan istwa a se te moun menm jan ak ou menm?
2. Èske pèsonaj yo se moun yo imajine ousinon moun reyèl?
3. Èske tout evènman sa yo vre oubyen se imajinasyon?
4. Kisa yo te fè Dogzilla pou l kite lakou a?

**Skill Focus: Structural Analysis**

Plurals of nouns Ending in – f or fe

Tell the students that the plural of most nouns in **English** is formed by adding –s or –es to the end of the word. Explain that that the **plurals** for **nouns** ending in –fe or –f are different. They are formed by changing the –fe or –f to –ves.

Teach: Copy this chart on the board.

Change the –fe or –f to –ves to form the plural.

Singular Noun	Plural Noun
Half	halves
elf	elves
wife	wives
wolf	wolves

Ask student to form the plural of these nouns: (hoof, leaf, life, loaf, knife calf)

**Skill focus: Gramè**

Possessive nouns: **Begin** by asking students to think about things that they own that are important to them.

**Explain** to students that writers show ownership with the use of an apostrophe. Point out that the possessive case of singular nouns is formed by adding apostrophe **s** and that the possessive of a plural noun is formed by adding only the apostrophe.

**Write** some examples of the possessive nouns: *Stanley’s bicycle, boy’s books, Maria’s sweater, Tim’s pencil.*

\*Eksplike elèv yo ke nou itilize non posesif en Kreyòl tou.  
Ekszanp: pa m, pa w, pa n, pa li (pa mwen, pa ou, pa nou,)

***Skill Focus: Vokabilè***

Fantasy realism believable fact real unbelievable imaginary fiction

Fantezi reyalite kwayab fè reyèl enkwayab imajine fiksyon

**Skill Focus: Ekriti**

Have students write a short journal entry that says what they would do if they met a giant dog such as Dogzilla.